

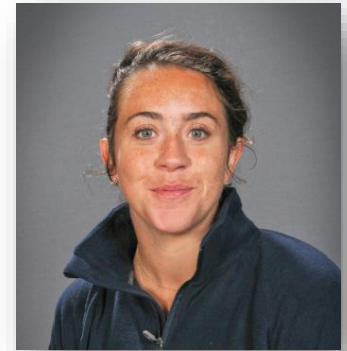


NEWSLETTER 39 – 5TH NOVEMBER

Message from Ms Smyth, Assistant Head

Having entered the month of November, we prepare for a month of remembrance and therefore I have chosen to explore the celebration of 'All Souls' and encourage the Mount House community to reflect on what we can learn from such traditions.

Many of you may have donned fancy dress last week to gain a sweet treat or scare a loved one, and although Halloween is over, many festivals continue around the world to honour loved ones who have passed.



From a young age I have always been fascinated with Día de los Muertos and it is on my bucket list to visit Mexico to watch this colourful celebration of life unfold. The origins of Día de los Muertos, and similar festivals spread across the world, date back to 1200 B.C. The purpose and origins of some of these coincide with the end of the harvest and beginning of the cold winter (Samhain), with some believing that the day is a time where the physical barriers of the spirit and human worlds blur and our ancestors communicate with the living.

The ancient Irish believed the dead were sources of wisdom and lore. Part of my fondness for these traditions is the bringing together of communities for something that could be sad, but is seen more positively as a spiritual journey, encouraging individuals to blend their memories of ways of old and with looking forward, using generational wisdom and influence to grow.

All Souls, a College at the University of Oxford, does not accept undergraduate members. After passing the 'world's most difficult entrance exam', its Fellows are involved solely in research and the advancement of knowledge, building on the wisdom of old and reminding us that there are always new things to learn. This started me thinking... what do you think our ancestors would be telling us right now? On the one hand we have the message of remembrance and in the same breath the importance of renewal and growth. After much reflection, I have used these ideas with the upper school students to encourage them to reflect on their whole self, communicate more and to harvest the wisdom of their teachers, parents, grandparents and family (the elders) to inspire growth.

Schools are a fertile environment for cultivating new ideas, harvesting talents and building character. Alongside the day-to-day invisible and tangible ideas of what is taught in lessons, there are the opportunities for our students to develop other soft skills such as leadership and decision making.

It is my goal that all our young souls (see what I did there?) at Mount House use their time at school to engage with all the opportunities available to them, make positive contributions to the wider community and take on many roles of responsibility around the School. We can all agree that this doesn't happen by osmosis but it literally requires 'all souls', all members of the community to take part.

Over the next few weeks, I will be developing our student leadership programme. I hope that the students will learn from each other, be role models to their peers and develop a stronger student voice. I will be writing about my progress and the available opportunities in future newsletters. So, for now, please use this message as a vehicle for reflection, an opportunity to talk and a time to progress.

MHS Christmas Pantomime - A Christmas Carol

On Wednesday 15th December at 11:00-12:30pm, there will be a performance of *A Christmas Carol*.

Each House has been given a portion of the story to present in their own unique way:



Chimborazo

Act 1 – Scrooge at the Counting House, Mr. Marley



Everest

Act 2 – Ghost of Christmas Past – Scrooges Childhood, Early Work Life and Lost Love



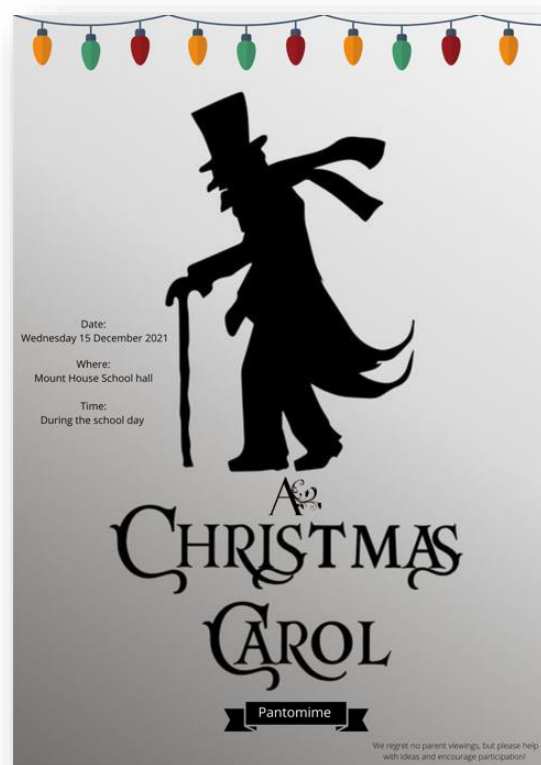
Olympus

Act 3 – Ghost of Christmas Present – Bob Cratchit's Home; Ghost of Christmas Future – Scrooge's Tragic End



Rushmore

Act 4 – Scrooge's Transformation





PSHE – Relationships

The topic for a number of year groups for PSHE lessons in recent weeks has centred around *Relationships*, so I thought it would be timely to share some of the themes in this newsletter.

Frenemies: People that pretend to be your friend, but don't act the way genuine friends do.

Toxic Friendship Groups: a group of friends you may not like, want to be with or who even like you, but you are scared about what could happen if you try to leave the group.

Genuine friendships: These last for years as they are based on mutual respect and are people who make each other feel good about themselves.

Maintaining genuine friendships and avoiding toxic ones is not always as easy as it sounds. We all need to be aware of the differences between good friends and toxic friends. Have a look at this check list and see if you recognise any of these statements in yourself or in your friends?

Good Friends	Toxic Friends
Celebrate your success	Get jealous of your achievements
They know the importance of giving you space	They try to occupy all your time
They are caring and empathetic	They criticise and judge you
They respect you and value your friendship	They lose their temper easily
They enjoy exchanging opinions	They only want to win the argument
They believe what you say is true	They doubt everything you say
They call you because they miss you	They only call when they need something from you
They accept you're the way you are	They try to change and control you
They know you have other friends and won't judge you for that	They don't like your other friends
They know how to keep a secret	They say things they shouldn't

PSHE lessons provide an excellent opportunity for students to discuss interesting, complex and topical subjects in a safe and inclusive environment. For example, we have had discussions about what can you do if you think you are in a toxic relationship; and how you can help someone who you think is in a toxic relationship. Students have also been working in small groups to come up with the most appropriate solutions to a variety of dilemmas and scenarios.

If you have any questions about this topic or any of the topics we cover in PSHE please do let me know.

Matt Kerr – Deputy Head – Pastoral



Sport

On the Friday afternoon before half term, the House cross country competition took place. The course was set up on Hadley Wood playing fields and comprised of a challenging 3km distance with lots of changing terrain and elevation. All students from Year 7 – 10 competed for their House and everyone encouraged their fellow participants. The event even consisted of some staff running, and special mention has to be given to Mr Nancarrow for running with our Year 7s.

After all the points had been added up, **Rushmore House** came out on top and won the event.





Hadley Wood Primary School workshop



The Year 5 class at Hadley Wood School had the opportunity to attend a workshop about the Greek Olympian Gods set up by six of our Year 10 students.

After a presentation about each Olympian, highlighting their responsibilities and characteristics, three activities were set up for the younger students to apply their knowledge: Jimi and Zac set up a Greek Gods 'Bingo', which became comically competitive; Darcie and Marissa created Top Trump cards where the younger students had to think carefully of the powers of each god; Iman and Amalya set up an arts and crafts corner where the students created an item or two that

represented their favourite god. When asked which god they would like to be, the most popular choices were, by a country mile, Poseidon, god of the sea, and Ares, god of war.

A message from the Year 5 teacher at Hadley Wood school: *"Thank you again for the lovely workshop; the children had a great time and were really excited to take their artwork and Top Trumps home! Could the next Year 5 class have the same experience with your delightful students?"*

The workshop was a hit and we are looking forward it to becoming an annual event, thanks to the creativeness, diligence and approachability of these six Mount House students. They made the Classics Department and Mount House proud.

Mrs Clarkson

Co-Curricular

Some of our clubs still have spaces if you would like to try them. Please ask Mr Brozny if you would like to come along and have a go.

Event	Day/Time	Staff	Location
Running Club	Monday before school	NHI	The Common
Badminton	Monday lunchtime L1+L2	SPE	Hall
Chamber Strings Group	Monday lunchtime 2	GWO	Music Suite
Choir	Tuesday before school	SWH	Music Suite
Badminton	Tuesday before school	DMA	Hall
House of Equality	Tuesday lunchtime L2	ABI + SAL	Room 18
Business Club	Tuesday lunchtime L2	GWO + JBO	Room 1
ECO Club	Tuesday lunchtime L2	OPA + SCL	Room 19
GCSE PE	Tuesday lunchtime L2	NHI	Hall



Art Club	Tuesday after school	ABA + ESO	Art Room
KS4 Textiles	Tuesday after school	NGR	Textiles
Y11 Biology Intervention	Tuesday after school	SPE + RVL	Room 12
Robotics	Tuesday after school	PBR	Room 1
Y10-Y13 Netball	Tuesday after school	NHI + RVL	MUGA
Y8 Football	Tuesday after school	DMA + AMU	MUGA
Y10 + Y11 Classics Club	Wednesday lunchtime 1	KFA	Room 9
Maths Intervention	Wednesday lunchtime 1	AHO + NGU	Room 16
Y11 Religious Education	Wednesday lunchtime 1	SHA	Room 4
Drama	Wednesday lunchtime 2	CKE + FDA	Drama Suite
French/Spanish Culture	Wednesday lunchtime 2	MLA	Room 17
Table Tennis	Wednesday lunchtime 2	AMU	Hall
Briscola Italian Card Game	Wednesday lunchtime 2	EMA	Room 20
Science Club Y7-9	Wednesday after school	SKA	Room 11
Y7-9 Netball	Wednesday after school	NHI + OPA	MUGA
Y9+10 Football	Wednesday after school	AMU + DMA	MUGA
Y11 Chemistry Intervention	Wednesday after school	PBR + SRO	Room 12
Varsity Club	Wednesday after school	CMC	Room 2
Chess Club	Wednesday after school	PGA + AHO	Room 14
Model Making	Wednesday after school	PNA + NGU	Room 22
Y7 Football	Thursday lunchtime 1	DMA + NHI	MUGA
Model UN Club	Thursday lunchtime 2	ANI	Room 23
Ukulele	Thursday lunchtime 2	PNA	Room 22
French GCSE Y11	Thursday lunchtime 2	ADA	Room 18
Boxing	Thursday lunchtime 2	SWI + Y11 GKE + KGA	Hall
Head's Endeavour Award	Thursday after school	TPH + JBO	Room 2
Phantoms	Thursday after school	SWH	Music Suite
Drama	Thursday after school	CKE + FDA	Drama Suite
Chamber Strings Group	Thursday after school	GWO	Music Suite
Basketball	Thursday after school	MKE	MUGA
Lacrosse	Thursday after school	MWH	MUGA
Golf	Thursday after school	TBD (extra charge)	Offsite
Y11 Physics Intervention	Thursday after school	PCO	Room 13
Drum Corps	Friday lunchtime 1+2	TBD	Music Suite
Experimental Photography	Friday lunchtime 1	ABA	Art Room
KS3 Mixed Football Comp.	Friday lunchtime 1+2	DMA + AMU	MUGA
Experimental Photography	Friday lunchtime 2	ABA	Art Room
Y11 English Intervention	Friday lunchtime 2	RMA	Room 9



Art - Christmas Card Competition

Christmas Card Competition 2021

The theme this year is:

Pride, Hope and Joy

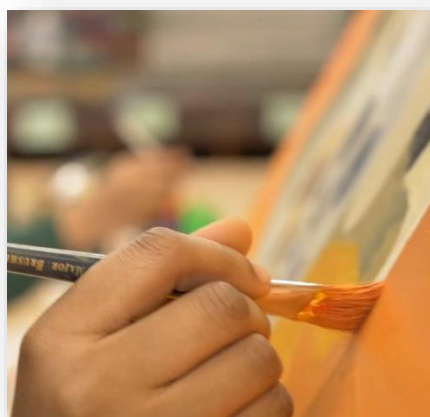
You should work on A5 sized paper and create a design that will work well as the school Christmas Card. Work carefully and creatively, making your image vibrant and colourful.

You do not have to add any words to your image.

Your materials need to be flat and suitable for printing from e.g. acrylic and watercolour paint, tissue paper and other flat collaged materials.

Hand in your design to your art teacher by **Friday 12th November**.

Please make sure that your name is on the back!



Social Media

Please follow, like and share posts with your connections:



@MountHouseSchoolBarnet



@MountHouseSch



@Mounthouse_school and @Mounthouseschool_artgallery



Mount House School



Music

We have a team of peripatetic music teachers who have spaces at lunchtimes and after school to teach the following instruments:

- Piano
- Double Bass
- Woodwind (flute, saxophone, clarinet)
- Guitar
- Cello

There's information (and a booking form) on the [website here](#) and in school on the music lessons board near The Hive about all of these teachers. Please ask Mr Whitehouse if there is another instrument you would like to learn that's not on the list.

PERIPATETIC MUSIC TEACHERS

LAURA BOOKBINDER WOODWIND

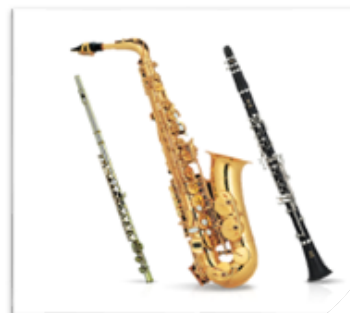


I started learning the flute at age eight and instantly knew that was the instrument for me. I went on to study at The Royal Academy of Music and The London College of Music, learning from some of the best musicians in the country.

I have over 25 years of teaching experience including conducting and coaching various windbands and ensembles. I teach a wide range of musical styles, from classical to jazz and use some very enjoyable teaching repertoire.

I tailor every student's learning experience individually. So, whether you want to work for exams or just learn at your own pace, every lesson will be a rewarding and productive experience.

Although the flute is my main instrument, I also play saxophone and clarinet. I play for many musical theatre productions, have recorded albums at Air Studios and performed in many well known venues including The Royal Albert Hall and Ronnie Scotts Jazz Club.






Upcoming Events

12 th November	Sixth Form Open Morning (for external students)
19 th November	School in Action Open Morning (for 2022 Year 7s)
8 th January	Assessment Day for Year 7 entry 2022

If you have family or friends who may be interested in attending our Open Mornings or registering their child for the Assessment Day, please let them know about these events.


www.mounthouse.org.uk/open-days



**MOUNT HOUSE
SCHOOL**
INSPIRING EVERY INDIVIDUAL

12 NOVEMBER 2021
11am–1pm

Sixth Form Open Morning



- School tour
- Meet students and subject teachers
- Find out about our co-curricular programme, sport and D of E
- Talk to us about post-school choices and careers
- Parents are welcome to attend with or without their children

For more information about Sixth Form and Open Days, please call **020 8449 6889** or visit the website www.mounthouse.org.uk

#InspiringMountHouse

SAVE THE DATE – Sixth Form Transition Evening, 20 January 2022, 4–6.30pm

Christmas Extravaganza: Wednesday 8th December, 16.00 – 18.00.